



M2M^{FL}

M2M^{FL}

Bradbury's M2M^{FL} range provides flood defence doors tested to PAS 1188-1:2014, with a designated maximum water depth of 840mm. Combining flood resistance and security, the range comprises of M2M^{2FL}, M2M^{3FL} and M2M^{4FL} doorsets, certified by the LPCB to LPS 1175 SR2 - SR4, and M2M^{FL}.

Available as single or double outward opening doorsets, the M2M^{FL} range comes with a variety of access options, and a selection of louvres and vision panels. The doors are also available with an integral escape hatch, allowing access and egress without compromising flood resilience.

Watertight and designed specifically to meet the needs of the utilities sector, Bradbury's M2M^{FL} range is ideal for unmanned locations where both security and flood protection measures are required.

SUITABLE APPLICATIONS

Electrical substations

Utilities housings

Store & bin rooms

Factories & warehouses

Industrial units

Retail outlets

Airports

Schools & universities



 bradbury®

M2M^{FL}

Flood defence doors tested to PAS1188-1:2014

revA

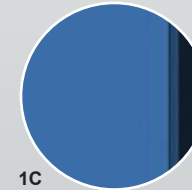




1A



1B



1C



1D

EXTERNAL ACCESS OPTIONS

1A Lever handle & key

1B Hasp & staple

1C No external access

1D Keypad access (solenoid)

SIZING

All sizes shown are structural sizes in mm.

	Min Height	Max Height	Min Width	Max Width
Single outward opening	1400	2450	800	1400
Double outward opening	1400	2450	1300	2700
Single outward opening with fixed over panel	1600	3500	800	1400
Double outward opening with fixed over panel	1600	3500	1300	2700

Double doorsets are available with unequal splits (minimum passive leaf width 450mm).

GENERAL CONSTRUCTION

- 60mm door leaf construction, manufactured from 1.5mm THK Zintec steel.
- 120mm single rebate frame, constructed from 80 x 40mm sections.
- 3no. bearing mounted lift off hinges to each leaf.
- Integral EDPM flood seal, and anti-pry strip to leading edge.
- Double doors supplied with a removable centre mullion.
- Optional integral escape hatch, independently locked for access and egress in flood situations.
- Optional external padlockable lock cover.

LOCKING

Full range of MICO A Bryll single point locks, with a range of external access options available. Heavy duty spring bolts fitted to passive leaf on double M2M^{1FL}, M2M^{2FL} and M2M^{3FL} doorsets. Tower bolts fitted to passive leaf on double M2M^{4FL} doorsets.

STAYS & CLOSERS

A range of standard door closers and limit stays available.



ESCAPE HATCH



2A

2B

2C

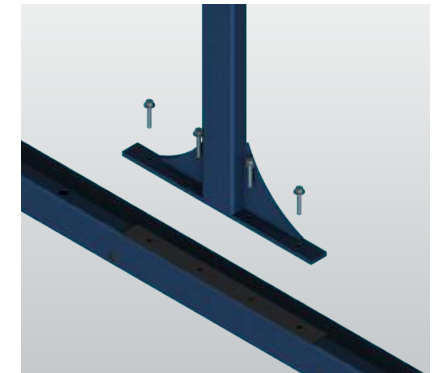


2D

INTERNAL ESCAPE OPTIONS

- 2A Lever handle & thumbturn
- 2B Emergency escape push pad
- 2C Emergency escape lever handle
- 2D Push button exit (solenoid)

REMOVABLE CENTRE MULLION



VISION PANELS

A range of vision panel options available above 1000mm FFL.

LOUVRES

Bladed louver systems available above 1000mm FFL.

FINISH

Doorsets are available primed or polyester powder coated in a wide range of colours and finishes. Bespoke options include high quality wood-grain and textured effects, as well as Extra Life paint guarantee, underwritten by Cromadex Akzo Nobel.

INSTALLATION

Doors to be fully factory assembled, and installed by a Bradbury specialist only to guarantee flood integrity of the doorsets. With over 20 years' experience in the survey and installation of security products, Bradbury's team of accredited installation engineers provide a nationwide fitting service.

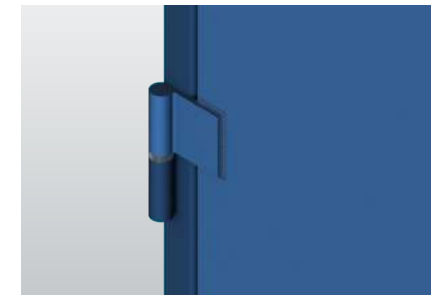
M2M^{2FL} M2M^{3FL} M2M^{4FL}

M2M^{FL} doorsets are tested to PAS1188-1:2014, and are available with varying levels of security. M2M^{2FL}, M2M^{3FL} and M2M^{4FL} are LPCB certified to LPS 1175 SR2, SR3 and SR4, respectively.

M2M^{+FL}

If LPCB certification is not required, M2M^{+FL} doors provide the same flood defence performance, with no security rating.

ADJUSTABLE LIFT OFF HINGES





Award-winning manufacturer of security doors, grilles, cages and bar sets.



Bradbury's M2M^{FL} range offers flood defence doorsets, successfully tested to PAS1188-1:2014 (Flood Protection Products), with optional LPCB certification to LPS 1175 (Issue 7) SR2, SR3 and SR4.

Specifically designed to offer secure protection against water ingress and unauthorised access, the M2M^{FL} range effectively provides protection for locations where flooding, vandalism and unlawful attempts at entry are anticipated.

As with all Bradbury products, each M2M^{FL} door is bespoke engineered to order, with a variety of hardware and locking options, and vision panels and louvres are available for application above flood level.

Bradbury's M2M^{FL} doorsets are also available with an integral escape hatch, which is independently locked, allowing access and egress during a flood scenario, without compromising the integrity of the doorset.

Peace of mind from the largest UK manufacturer of steel doors, grilles, cages and bar sets.

Bradbury Group Ltd.
Dunlop Way
Queensway Industrial Estate
Scunthorpe
North Lincolnshire
DN16 3RN

T +44 (0)1724 271999
E sales@bradburyuk.com
www.bradburyuk.com

