

## 1. Scope

- Single outward opening doorsets
- Double outward opening doorsets
- Single inward opening doorsets
- Double inward opening doorsets

## 2. Sizing

All sizes shown are structural sizes in mm.

Variant	Min Height	Max Height	Min Width	Max Width
Single outward opening doorsets	1000	2930	600	1430
Double outward opening doorsets	1000	2930	900	2600
Single inward opening doorsets	1000	2930	600	1430
Double inward opening doorsets	1000	2930	900	2600

Note:

- Leaf and a half doorsets are available, with a minimum passive leaf width of 450mm.
- Side and/or over panels can be used in a modular fashion to secure larger openings.

## 3. Locking Options

- MICO Abyll panic escape, manual, automatic, and electromechanical deadlock single point locking
- MICO 942 2/3 point locking systems
- Double panic bar variant also available (panic bars fitted to both leaves of double doorsets)
- External access via MICO USCH cylinder guard with Scandinavian oval cylinders, as standard
- MICO ELK3 can be supplied for use with panic escape variants (available also to suit round or rim cylinders)
- Padlockable hasp and staple access device
- Passive leaf fitted with heavy duty tower bolts, as standard, or secondary multipoint lock (tower bolts extended to a reachable height on larger doorsets)

## 4. Additional Options

- Vision panels (standard sizes in mm are 203x356, 203x762, 457x457)
- Punched and/or bladed louvre cartridges
- Range of stays and closers (M100 and TS83, as standard)
- Removable over panels
- Fixed side and/or over panels (successfully tested but awaiting final assessment from the LPCB)

## 5. Security Rating

M2M<sup>3</sup> doors are LPCB certified to LPS 1175: Issue 7 Security Rating 3 (certificate number 312e).

## 6. Fire Rating

M2M<sup>3</sup> doors are available with a fire rating up to FD240, providing integrity fire resistance for up to 240 minutes, certified by Exova under the CERTIFIRE scheme (certificate number CF5107).

Note:

- 2/3 point locking systems are not fire rated.

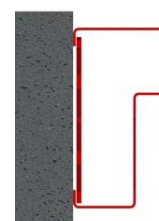
- Doors fitted with removable over panels are not fire rated.
- Vision panels reduce the doorset's fire rating to FD60.
- Doors with louvres are not fire rated.

## 7. Leaf Construction

- Leaf thickness – 66mm
- Leaf material
  - Outerskins 1.5mm THK Zintec
  - Internal plating to suit locking requirement
  - Armoured steel, where required
- Hinges
  - 6no. hinges per leaf
  - Choice of 126mm lift off hinges or grade 13 butt hinges
  - Protected by 9no. hooked dog bolts per leaf
- Astragal – 10mm steel astragal
- Lifting Points – M10 lifting point per leaf

## 8. Frame Construction

- Frame profile – 110mm deep
- Frame material – 1.5mm THK Zintec
- Construction method
  - Butt jointed frame sections, as standard
  - Fully welded frame available at an extra cost
- Reinforcing – 3mm chassis system (no adjusters)
- Threshold
  - Steel or aluminium options available
  - No sill option available



Frame profile

## 9. Standard Details

- Finish
  - Polyester powder coated, as standard
  - Wood effect finish available at an extra cost
- U'value – No data available
- Weight – Circa 75kg/m<sup>2</sup>